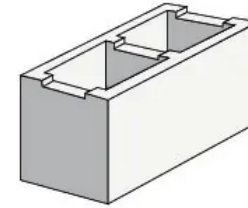


Product Details

Product Range	GB Honed
Texture Finish	Honed
Colours	Pottery, Nickel, Pebble, Porcelain, Pewter & Limestone
Product Code	
Format	20.42 Channel
Place of Manufacture	-
Length (mm)	390
Width (mm)	190
Height (mm)	190
Size	390x190x190
Core Volume (%)	-
Characteristic Unconfined Compressive Strength (f'uc) MPa	-
Minimum Shell Thickness (mm)	30
Weight	15.2
Units Per Tonne	66.666666666667
Units Per Pallet	90
Units per Square Metre	-
Durability Class	Exposure Grade
Slip Resistance	
Wall Mass Inc Hollow	204
Solar Absorption Rating	-
LRV	-
FRL	-
EPD	Yes
Declare	No
Recycled Content %	no

Diagram



Fire Resistance Levels^

Structural Adequacy	60 to 240 (see notes)
Integrity	60
Insulation	60

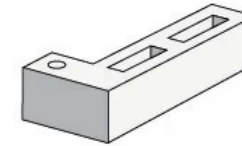
Notes

-

Product Details

Product Range	GB Honed
Texture Finish	Honed
Colours	Limestone, Porcelain, Nickel, Pewter, Pebble & Pottery
Product Code	10.725 Half Height Corner
Format	10.725 Half Height Corner10.725 Half Height Corner
Place of Manufacture	Gympie, Queensland
Length (mm)	390
Width (mm)	190
Height (mm)	90
Size	390x190x90
Core Volume (%)	-
Characteristic Unconfined Compressive Strength (f'uc) MPa	-
Minimum Shell Thickness (mm)	-
Weight	6.7
Units Per Tonne	149.25373134328
Units Per Pallet	240
Units per Square Metre	-
Durability Class	Exposure Grade
Slip Resistance	
Wall Mass Inc Hollow	-
Solar Absorption Rating	-
LRV	-
FRL	-
EPD	Yes
Declare	No
Recycled Content %	-

Diagram



Fire Resistance Levels^

Structural Adequacy	-
Integrity	-
Insulation	-

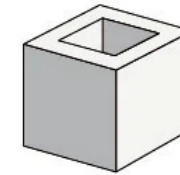
Notes

Maximum slenderness ratio (srf) unreinforced masonry from AS3700:2018 Table 6.1 is: 18.0 at 60 minutes | 17.0 at 90 minutes | 16.0 at 120 minutes | 15.5 at 180 minutes | 15.5 at 240 minutes. This data represents average results from production lots based on the results achieved by samples selected at random for testing. Figures are accurate at date of publication and subject to change without notice. Contact us for confirmation of product specification. Tested as per AS/NZS 4455.1: 2008 and 4456: 2003. Fire resistance levels as per AS3700: 2018. Acoustic opinion derived from Day Design Pty Ltd. 2012. Tested in accordance with AS 1191:1001 and AS/NZS 1276.1:1999. ^When reinforced and Srf 36: 240 minutes

Product Details

Product Range	GB Honed
Texture Finish	Honed
Colours	Pewter, Limestone, Pottery, Nickel, Porcelain & Pebble
Product Code	20.03 Half
Format	20.03 Half
Place of Manufacture	Gympie, Queensland
Length (mm)	190
Width (mm)	190
Height (mm)	190
Size	190x190x190
Core Volume (%)	-
Characteristic Unconfined Compressive Strength (f'uc) MPa	-
Minimum Shell Thickness (mm)	30
Weight	8.7
Units Per Tonne	114.94252873563
Units Per Pallet	180
Units per Square Metre	-
Durability Class	Exposure Grade
Slip Resistance	
Wall Mass Inc Hollow	-
Solar Absorption Rating	-
LRV	-
FRL	-
EPD	Yes
Declare	No
Recycled Content %	-

Diagram



Fire Resistance Levels^

Structural Adequacy	60 to 240 (see notes)
Integrity	60
Insulation	60

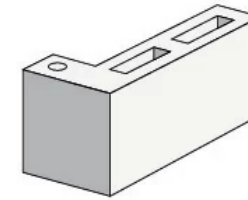
Notes

Maximum slenderness ratio (srf) unreinforced masonry from AS3700:2018 Table 6.1 is: 18.0 at 60 minutes | 17.0 at 90 minutes | 16.0 at 120 minutes | 15.5 at 180 minutes | 15.5 at 240 minutes. This data represents average results from production lots based on the results achieved by samples selected at random for testing. Figures are accurate at date of publication and subject to change without notice. Contact us for confirmation of product specification. Tested as per AS/NZS 4455.1: 2008 and 4456: 2003. Fire resistance levels as per AS3700: 2018. Acoustic opinion derived from Day Design Pty Ltd. 2012. Tested in accordance with AS 1191:1001 and AS/NZS 1276.1:1999. ^When reinforced and Srf 36: 240 minutes

Product Details

Product Range	GB Honed
Texture Finish	Honed
Colours	Pebble, Porcelain, Nickel, Limestone, Pottery & Pewter
Product Code	10.25 Corner Return
Format	10.25 Corner Return
Place of Manufacture	Gympie, Queensland
Length (mm)	390
Width (mm)	190
Height (mm)	190
Size	390x190x190
Core Volume (%)	-
Characteristic Unconfined Compressive Strength (f'uc) MPa	-
Minimum Shell Thickness (mm)	-
Weight	15.2
Units Per Tonne	192.30769230769
Units Per Pallet	120
Units per Square Metre	-
Durability Class	Exposure Grade
Slip Resistance	
Wall Mass Inc Hollow	-
Solar Absorption Rating	-
LRV	-
FRL	-
EPD	Yes
Declare	No
Recycled Content %	-

Diagram



Fire Resistance Levels^

Structural Adequacy	60 to 240 (see notes)
Integrity	60
Insulation	60

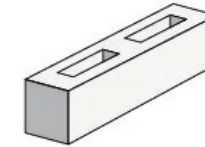
Notes

Maximum slenderness ratio (srf) unreinforced masonry from AS3700:2018 Table 6.1 is: 18.0 at 60 minutes | 17.0 at 90 minutes | 16.0 at 120 minutes | 15.5 at 180 minutes | 15.5 at 240 minutes. This data represents average results from production lots based on the results achieved by samples selected at random for testing. Figures are accurate at date of publication and subject to change without notice. Contact us for confirmation of product specification. Tested as per AS/NZS 4455.1: 2008 and 4456: 2003. Fire resistance levels as per AS3700: 2018. Acoustic opinion derived from Day Design Pty Ltd. 2012. Tested in accordance with AS 1191:1001 and AS/NZS 1276.1:1999. ^When reinforced and Srf 36: 240 minutes

Product Details

Product Range	GB Honed
Texture Finish	Honed
Colours	Pewter, Porcelain, Pebble, Nickel & Limestone
Product Code	10.71 Half Height
Format	10.71 Half Height
Place of Manufacture	Gympie, Queensland
Length (mm)	390
Width (mm)	90
Height (mm)	90
Size	390x90x90
Core Volume (%)	-
Characteristic Unconfined Compressive Strength (f'uc) MPa	-
Minimum Shell Thickness (mm)	25
Weight	5.3
Units Per Tonne	188.67924528302
Units Per Pallet	360
Units per Square Metre	-
Durability Class	Exposure Grade
Slip Resistance	-
Wall Mass Inc Hollow	-
Solar Absorption Rating	-
LRV	-
FRL	-
EPD	Yes
Declare	No
Recycled Content %	-

Diagram



Fire Resistance Levels^

Structural Adequacy	60 to 240 (see notes)
Integrity	60
Insulation	60

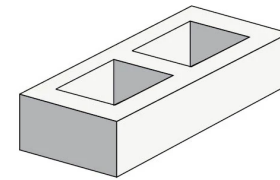
Notes

Maximum slenderness ratio (srf) unreinforced masonry from AS3700:2018 Table 6.1 is: 18.0 at 60 minutes | 17.0 at 90 minutes | 16.0 at 120 minutes | 15.5 at 180 minutes | 15.5 at 240 minutes. This data represents average results from production lots based on the results achieved by samples selected at random for testing. Figures are accurate at date of publication and subject to change without notice. Contact us for confirmation of product specification. Tested as per AS/NZS 4455.1: 2008 and 4456: 2003. Fire resistance levels as per AS3700: 2018. Acoustic opinion derived from Day Design Pty Ltd. 2012. Tested in accordance with AS 1191:1001 and AS/NZS 1276.1:1999. ^When reinforced and Srf 36: 240 minutes

Product Details

Product Range	GB Honed
Texture Finish	Honed
Colours	Nickel, Limestone, Porcelain, Pottery, Pebble & Pewter
Product Code	20.71 Half Block
Format	20.71 Half Block
Place of Manufacture	Gympie, Queensland
Length (mm)	390
Width (mm)	190
Height (mm)	90
Size	390x190x90
Core Volume (%)	-
Characteristic Unconfined Compressive Strength (f'uc) MPa	-
Minimum Shell Thickness (mm)	30
Weight	8
Units Per Tonne	125
Units Per Pallet	180
Units per Square Metre	-
Durability Class	Exposure Grade
Slip Resistance	
Wall Mass Inc Hollow	215
Solar Absorption Rating	0.65
LRV	-
FRL	-
EPD	Yes
Declare	No
Recycled Content %	-

Diagram



Fire Resistance Levels^

Structural Adequacy	60 to 240 (see notes)
Integrity	60
Insulation	60

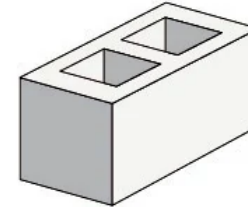
Notes

Maximum slenderness ratio (srf) unreinforced masonry from AS3700:2018 Table 6.1 is: 18.0 at 60 minutes | 17.0 at 90 minutes | 16.0 at 120 minutes | 15.5 at 180 minutes | 15.5 at 240 minutes. This data represents average results from production lots based on the results achieved by samples selected at random for testing. Figures are accurate at date of publication and subject to change without notice. Contact us for confirmation of product specification. Tested as per AS/NZS 4455.1: 2008 and 4456: 2003. Fire resistance levels as per AS3700: 2018. Acoustic opinion derived from Day Design Pty Ltd. 2012. Tested in accordance with AS 1191:1001 and AS/NZS 1276.1:1999. ^When reinforced and Srf 36: 240 minutes

Product Details

Product Range	GB Honed
Texture Finish	Honed
Colours	Pottery, Porcelain, Pebble, Pewter, Nickel & Limestone
Product Code	
Format	20.01 Standard
Place of Manufacture	-
Length (mm)	390
Width (mm)	190
Height (mm)	190
Size	390x190x190
Core Volume (%)	-
Characteristic Unconfined Compressive Strength (f'uc) MPa	-
Minimum Shell Thickness (mm)	30
Weight	15.2
Units Per Tonne	64.102564102564
Units Per Pallet	90
Units per Square Metre	-
Durability Class	Exposure Grade
Slip Resistance	
Wall Mass Inc Hollow	199
Solar Absorption Rating	-
LRV	-
FRL	-
EPD	Yes
Declare	No
Recycled Content %	no

Diagram



Fire Resistance Levels^

Structural Adequacy	60 to 240 (see notes)
Integrity	60
Insulation	60

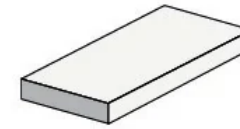
Notes

-

Product Details

Product Range	GB Honed
Texture Finish	Honed
Colours	Pottery, Porcelain, Pewter, Limestone, Pebble & Nickel
Product Code	
Format	50.31 Capping Unit
Place of Manufacture	-
Length (mm)	390
Width (mm)	190
Height (mm)	40
Size	390x190x40
Core Volume (%)	-
Characteristic Unconfined Compressive Strength (f'uc) MPa	-
Minimum Shell Thickness (mm)	-
Weight	6.1
Units Per Tonne	163.93442622951
Units Per Pallet	288
Units per Square Metre	-
Durability Class	Exposure Grade
Slip Resistance	
Wall Mass Inc Hollow	-
Solar Absorption Rating	-
LRV	-
FRL	-
EPD	Yes
Declare	No
Recycled Content %	no

Diagram



Fire Resistance Levels^

Structural Adequacy	60 to 240 (see notes)
Integrity	60
Insulation	60

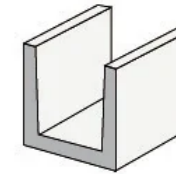
Notes

-

Product Details

Product Range	GB Honed
Texture Finish	Honed
Colours	Limestone, Pewter, Nickel, Porcelain & Pottery
Product Code	
Format	20.13 Lintel
Place of Manufacture	Gympie, Queensland
Length (mm)	190
Width (mm)	190
Height (mm)	190
Size	190x190x190
Core Volume (%)	>30
Characteristic Unconfined Compressive Strength (f'uc) MPa	>15
Minimum Shell Thickness (mm)	30
Weight	8.7
Units Per Tonne	114.94252873563
Units Per Pallet	180
Units per Square Metre	-
Durability Class	Exposure Grade
Slip Resistance	
Wall Mass Inc Hollow	-
Solar Absorption Rating	-
LRV	51.8
FRL	-
EPD	Yes
Declare	No
Recycled Content %	-

Diagram



Fire Resistance Levels^

Structural Adequacy	-
Integrity	-
Insulation	-

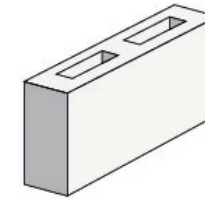
Notes

-

Product Details

Product Range	GB Honed
Texture Finish	Honed
Colours	Pebble, Porcelain, Nickel, Limestone, Pewter & Pottery
Product Code	10.01 Standard
Format	10.01 Standard
Place of Manufacture	Gympie, Queensland
Length (mm)	390
Width (mm)	90
Height (mm)	190
Size	390x90x190
Core Volume (%)	-
Characteristic Unconfined Compressive Strength (f'uc) MPa	-
Minimum Shell Thickness (mm)	25
Weight	10
Units Per Tonne	90.909090909091
Units Per Pallet	180
Units per Square Metre	-
Durability Class	Exposure Grade
Slip Resistance	
Wall Mass Inc Hollow	150
Solar Absorption Rating	-
LRV	-
FRL	-
EPD	Yes
Declare	No
Recycled Content %	-

Diagram



Fire Resistance Levels^

Structural Adequacy	60 to 240 (see notes)
Integrity	60
Insulation	60

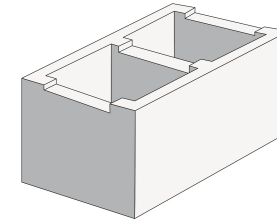
Notes

Maximum slenderness ratio (srf) unreinforced masonry from AS3700:2018 Table 6.1 is: 18.0 at 60 minutes | 17.0 at 90 minutes | 16.0 at 120 minutes | 15.5 at 180 minutes | 15.5 at 240 minutes. This data represents average results from production lots based on the results achieved by samples selected at random for testing. Figures are accurate at date of publication and subject to change without notice. Contact us for confirmation of product specification. Tested as per AS/NZS 4455.1: 2008 and 4456: 2003. Fire resistance levels as per AS3700: 2018. Acoustic opinion derived from Day Design Pty Ltd. 2012. Tested in accordance with AS 1191:1001 and AS/NZS 1276.1:1999. ^When reinforced and Srf 36: 240 minutes

Product Details

Product Range	GB Honed
Texture Finish	Honed
Colours	Pewter, Nickel, Pottery, Limestone, Pebble & Porcelain
Product Code	
Format	30.42 Channel
Place of Manufacture	Gympie, Queensland
Length (mm)	390
Width (mm)	290
Height (mm)	190
Size	390x290x190
Core Volume (%)	-
Characteristic Unconfined Compressive Strength (f'uc) MPa	>15
Minimum Shell Thickness (mm)	-
Weight	20
Units Per Tonne	50
Units Per Pallet	60
Units per Square Metre	-
Durability Class	Exposure Grade
Slip Resistance	
Wall Mass Inc Hollow	-
Solar Absorption Rating	-
LRV	19.7
FRL	-
EPD	Yes
Declare	No
Recycled Content %	-

Diagram



Fire Resistance Levels^

Structural Adequacy	-
Integrity	-
Insulation	-

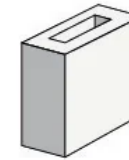
Notes

-

Product Details

Product Range	GB Honed
Texture Finish	Honed
Colours	Pottery, Nickel, Porcelain, Limestone, Pebble & Pewter
Product Code	
Format	10.03 Half
Place of Manufacture	-
Length (mm)	190
Width (mm)	90
Height (mm)	190
Size	190x90x190
Core Volume (%)	-
Characteristic Unconfined Compressive Strength (f'uc) MPa	-
Minimum Shell Thickness (mm)	30
Weight	4.9
Units Per Tonne	204.08163265306
Units Per Pallet	360
Units per Square Metre	-
Durability Class	Exposure Grade
Slip Resistance	
Wall Mass Inc Hollow	-
Solar Absorption Rating	-
LRV	-
FRL	-
EPD	Yes
Declare	No
Recycled Content %	no

Diagram



Fire Resistance Levels^

Structural Adequacy	60 to 240 (see notes)
Integrity	60
Insulation	60

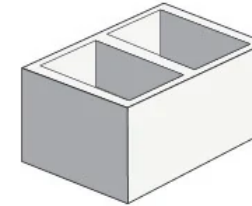
Notes

-

Product Details

Product Range	GB Honed
Texture Finish	Honed
Colours	Nickel, Limestone, Pewter, Pebble & Porcelain
Product Code	30.01 Full
Format	30.01 Full
Place of Manufacture	Gympie, Queensland
Length (mm)	390
Width (mm)	290
Height (mm)	190
Size	390x290x190
Core Volume (%)	-
Characteristic Unconfined Compressive Strength (f'uc) MPa	-
Minimum Shell Thickness (mm)	-
Weight	20
Units Per Tonne	50
Units Per Pallet	60
Units per Square Metre	-
Durability Class	Exposure Grade
Slip Resistance	
Wall Mass Inc Hollow	-
Solar Absorption Rating	-
LRV	-
FRL	-
EPD	Yes
Declare	No
Recycled Content %	-

Diagram



Fire Resistance Levels^

Structural Adequacy	-
Integrity	-
Insulation	-

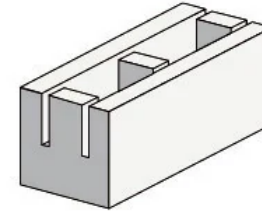
Notes

Maximum slenderness ratio (srf) unreinforced masonry from AS3700:2018 Table 6.1 is: 18.0 at 60 minutes | 17.0 at 90 minutes | 16.0 at 120 minutes | 15.5 at 180 minutes | 15.5 at 240 minutes. This data represents average results from production lots based on the results achieved by samples selected at random for testing. Figures are accurate at date of publication and subject to change without notice. Contact us for confirmation of product specification. Tested as per AS/NZS 4455.1: 2008 and 4456: 2003. Fire resistance levels as per AS3700: 2018. Acoustic opinion derived from Day Design Pty Ltd. 2012. Tested in accordance with AS 1191:1001 and AS/NZS 1276.1:1999. ^When reinforced and Srf 36: 240 minutes

Product Details

Product Range	GB Honed
Texture Finish	Honed
Colours	Nickel, Pewter, Pottery, Porcelain, Limestone & Pebble
Product Code	20.20 Knockout
Format	20.20 Knockout
Place of Manufacture	Gympie, Queensland
Length (mm)	390
Width (mm)	190
Height (mm)	190
Size	390x190x190
Core Volume (%)	-
Characteristic Unconfined Compressive Strength (f'uc) MPa	-
Minimum Shell Thickness (mm)	30
Weight	15.2
Units Per Tonne	78.740157480315
Units Per Pallet	90
Units per Square Metre	-
Durability Class	Exposure Grade
Slip Resistance	
Wall Mass Inc Hollow	168
Solar Absorption Rating	-
LRV	-
FRL	-
EPD	Yes
Declare	No
Recycled Content %	-

Diagram



Fire Resistance Levels^

Structural Adequacy	60 to 240 (see notes)
Integrity	60
Insulation	60

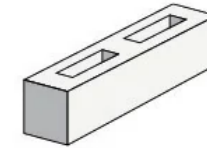
Notes

Maximum slenderness ratio (srf) unreinforced masonry from AS3700:2018 Table 6.1 is: 18.0 at 60 minutes | 17.0 at 90 minutes | 16.0 at 120 minutes | 15.5 at 180 minutes | 15.5 at 240 minutes. This data represents average results from production lots based on the results achieved by samples selected at random for testing. Figures are accurate at date of publication and subject to change without notice. Contact us for confirmation of product specification. Tested as per AS/NZS 4455.1: 2008 and 4456: 2003. Fire resistance levels as per AS3700: 2018. Acoustic opinion derived from Day Design Pty Ltd. 2012. Tested in accordance with AS 1191:1001 and AS/NZS 1276.1:1999. ^When reinforced and Srf 36: 240 minutes

Product Details

Product Range	GB Honed
Texture Finish	Honed
Colours	Pottery &
Product Code	
Format	10.71 Half Height
Place of Manufacture	-
Length (mm)	390
Width (mm)	190
Height (mm)	90
Size	390x190x90
Core Volume (%)	-
Characteristic Unconfined Compressive Strength (f'uc) MPa	-
Minimum Shell Thickness (mm)	25
Weight	-
Units Per Tonne	188.67924528302
Units Per Pallet	360
Units per Square Metre	-
Durability Class	Exposure Grade
Slip Resistance	
Wall Mass Inc Hollow	-
Solar Absorption Rating	-
LRV	-
FRL	-
EPD	Yes
Declare	No
Recycled Content %	no

Diagram



Fire Resistance Levels^

Structural Adequacy	60 to 240 (see notes)
Integrity	60
Insulation	60

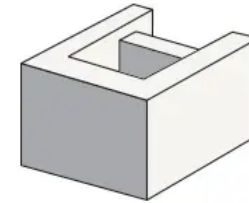
Notes

-

Product Details

Product Range	GB Honed
Texture Finish	Honed
Colours	Porcelain, Pewter & Nickel
Product Code	30.02 Three Quarter
Format	30.02 Three Quarter
Place of Manufacture	Gympie, Queensland
Length (mm)	290
Width (mm)	290
Height (mm)	190
Size	290x290x190
Core Volume (%)	-
Characteristic Unconfined Compressive Strength (f'uc) MPa	-
Minimum Shell Thickness (mm)	-
Weight	16.7
Units Per Tonne	59.880239520958
Units Per Pallet	80
Units per Square Metre	-
Durability Class	Exposure Grade
Slip Resistance	
Wall Mass Inc Hollow	-
Solar Absorption Rating	-
LRV	-
FRL	-
EPD	Yes
Declare	No
Recycled Content %	-

Diagram



Fire Resistance Levels^

Structural Adequacy	60 to 240 (see notes)
Integrity	60
Insulation	60

Notes

Maximum slenderness ratio (srf) unreinforced masonry from AS3700:2018 Table 6.1 is: 18.0 at 60 minutes | 17.0 at 90 minutes | 16.0 at 120 minutes | 15.5 at 180 minutes | 15.5 at 240 minutes. This data represents average results from production lots based on the results achieved by samples selected at random for testing. Figures are accurate at date of publication and subject to change without notice. Contact us for confirmation of product specification. Tested as per AS/NZS 4455.1: 2008 and 4456: 2003. Fire resistance levels as per AS3700: 2018. Acoustic opinion derived from Day Design Pty Ltd. 2012. Tested in accordance with AS 1191:1001 and AS/NZS 1276.1:1999. ^When reinforced and Srf 36: 240 minutes